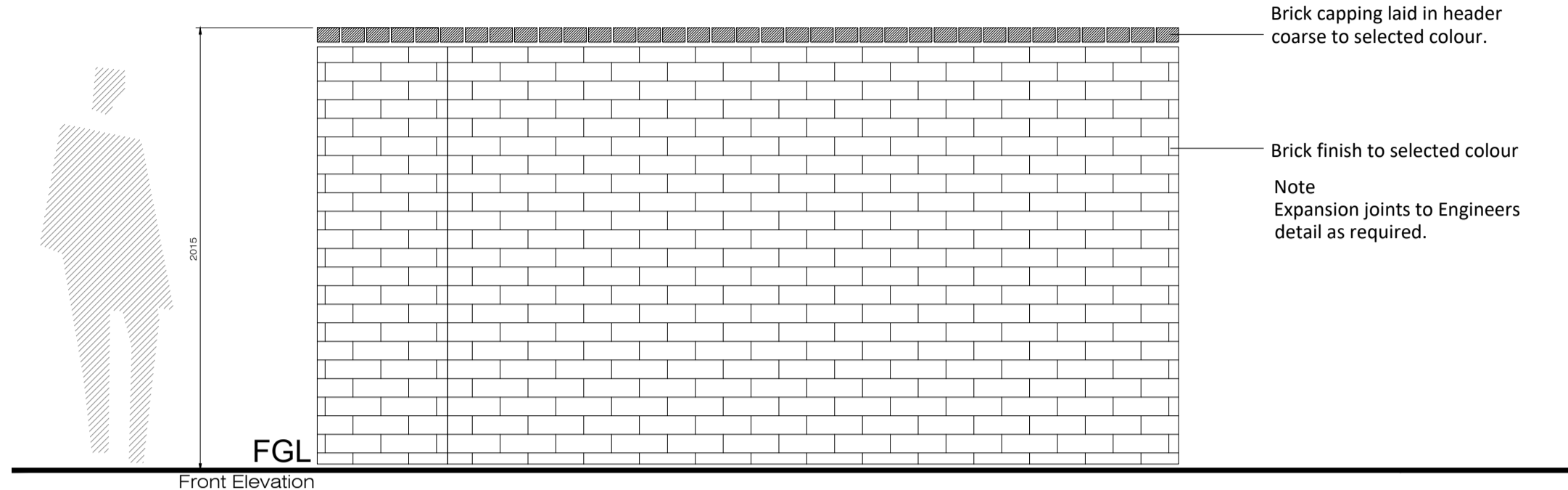
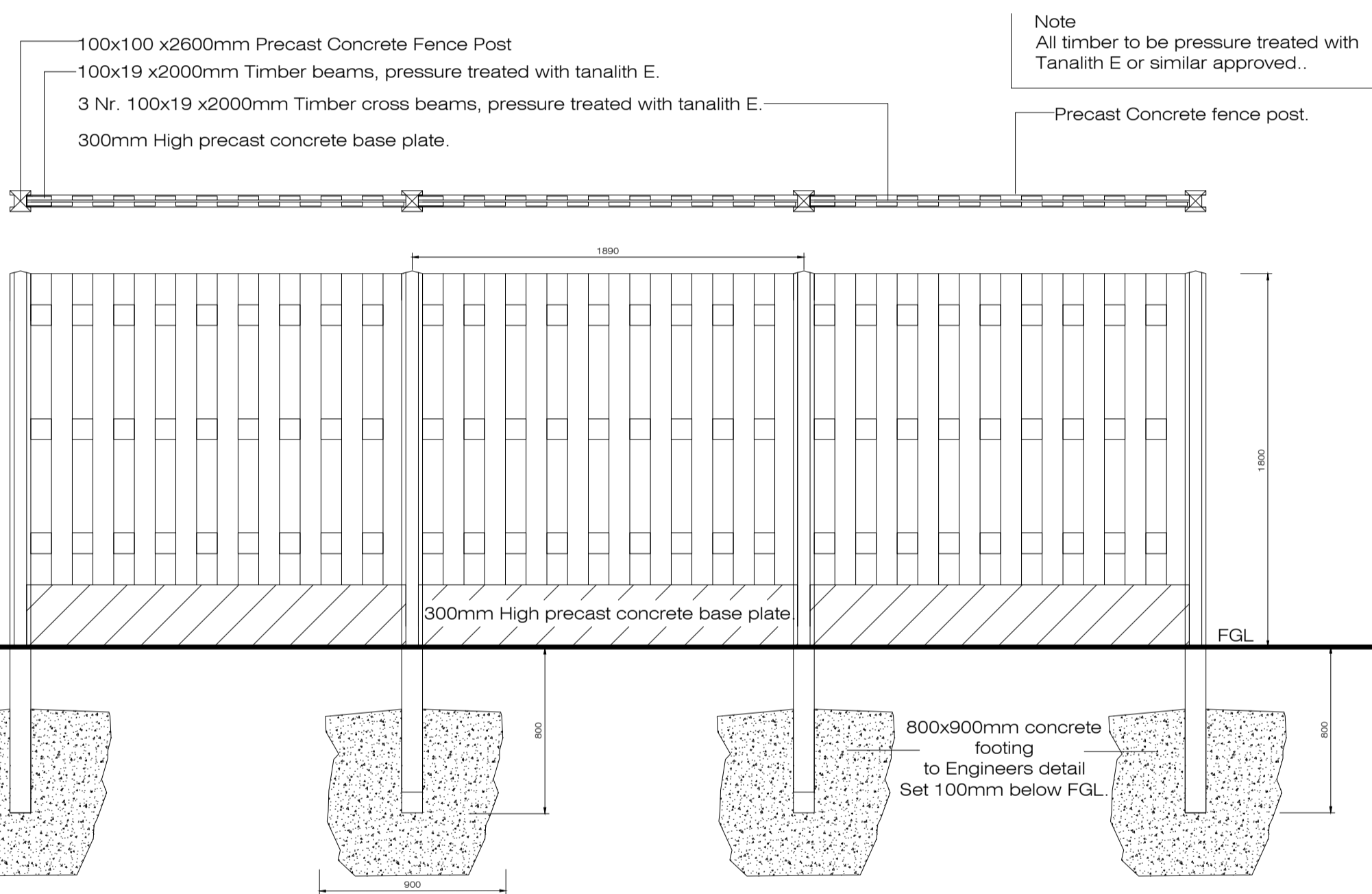
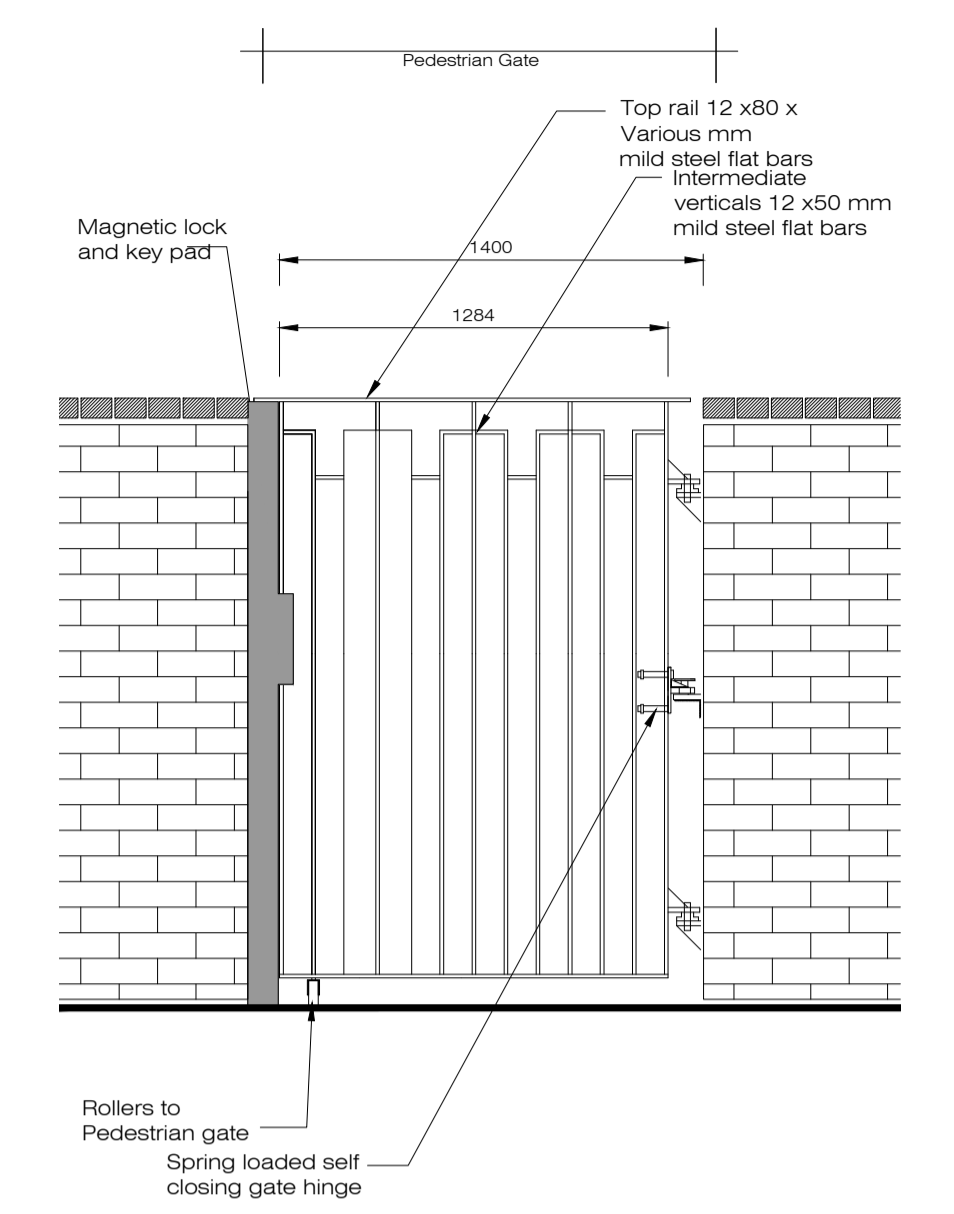


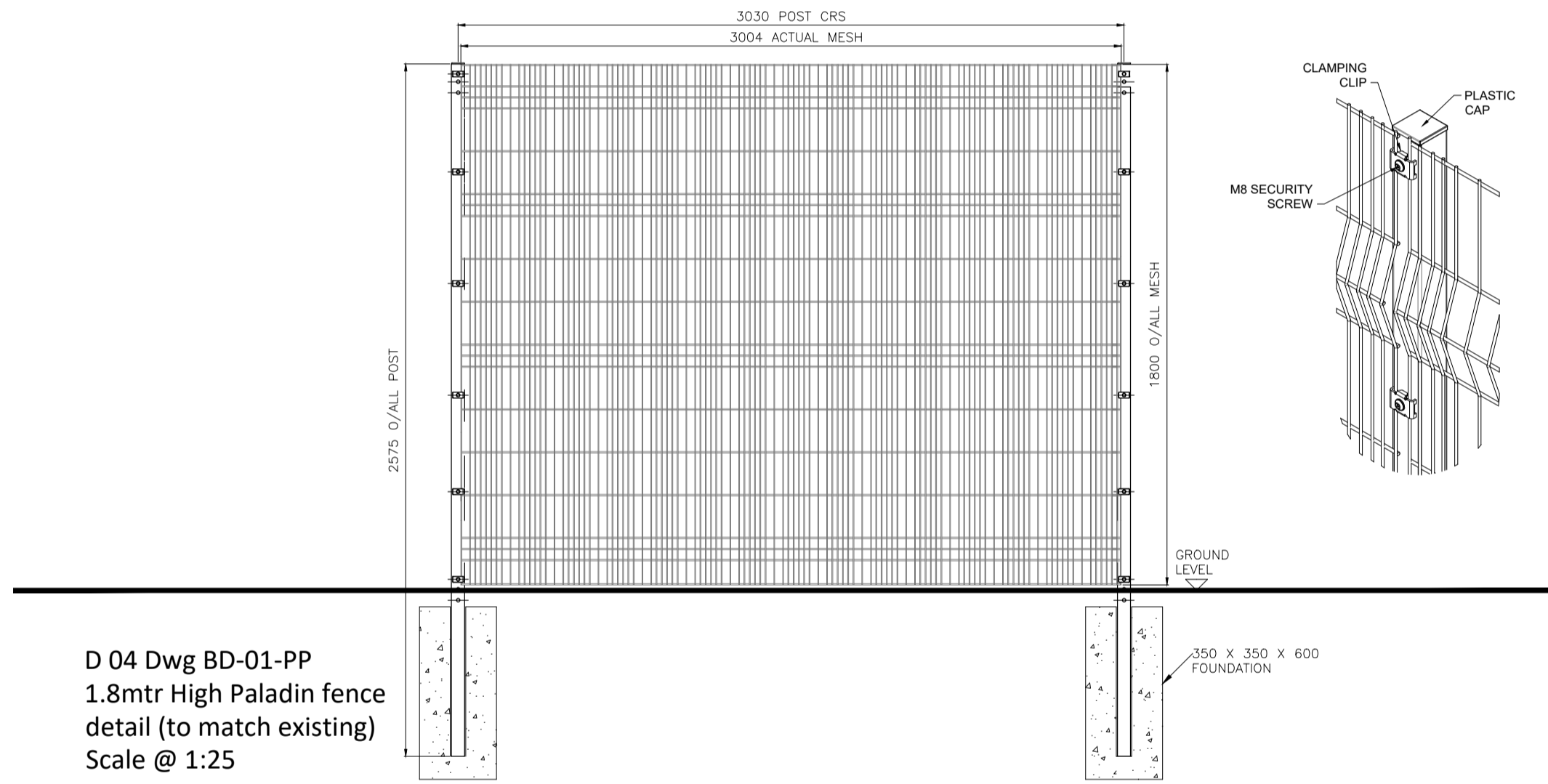
**D 01 Dwg BD-01-PP**  
 2.0mtr High Block wall, capped with a render finish, with brick piers  
 Scale @ 1:25



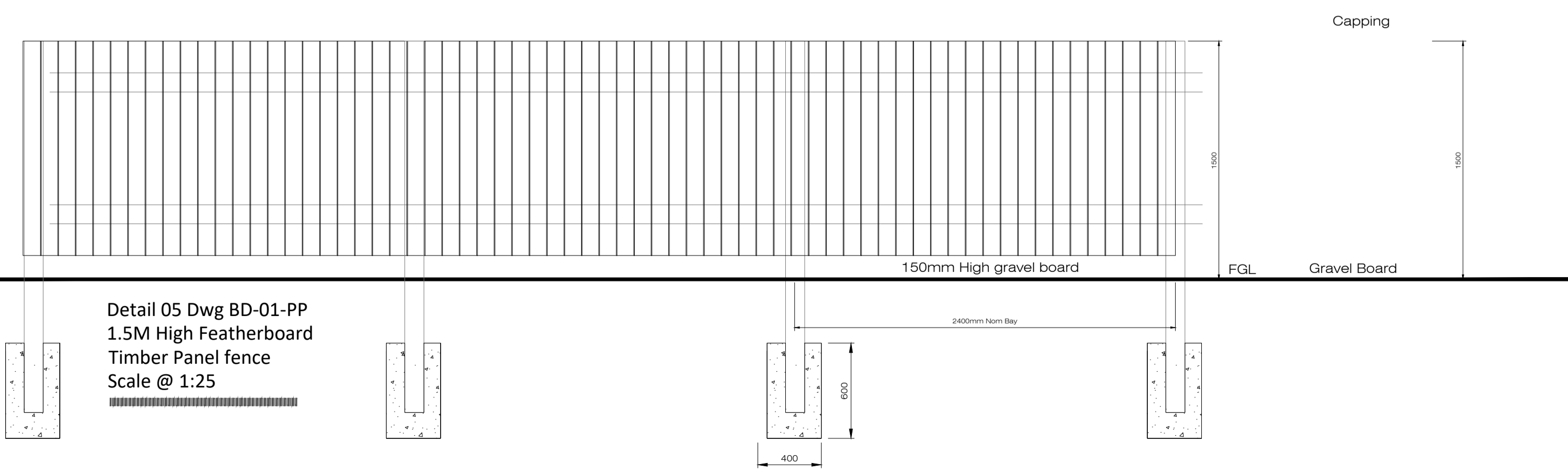
**D 02 Dwg BD-01-PP**  
 2.0mtr High Brick wall, brick capped, with brick piers and associated gating  
 Scale @ 1:25



**Detail 03 Dwg BD-01-PP**  
 1.8M High Precast Concrete Post with Timber Panel fence  
 Scale @ 1:25



**D 04 Dwg BD-01-PP**  
 1.8mtr High Paladin fence detail (to match existing)  
 Scale @ 1:25



**Detail 05 Dwg BD-01-PP**  
 1.5M High Featherboard Timber Panel fence  
 Scale @ 1:25



Rev.	Date	Note

Project name: <b>Proposed Strategic Housing Development at Dunshaughlin East - Phase 2</b>	Project number: <b>19-048</b>
Drawing name: <b>Boundary Treatment Details (1 of 5)</b>	Drawing number: <b>BD-01-PP</b>

Drawing scale @ A1: <b>1:25</b>	Drawn by: <b>ad</b>	Checked by: <b>ld</b>
Status: <b>Planning</b>	date: <b>30.09.2020</b>	

Contact details: Linda Doyle (Director) mobile: 087 267 4196 e-mail: linda@doyle-otroithigh.com Daire O'Troithigh (Director) mobile: 086 300 3499 e-mail: daire@doyle-otroithigh.com	Office address: Pembroke House, 28-32 Upper Pembroke St, Dublin 2.
--------------------------------------------------------------------------------------------------------------------------------------------------------------------------------------------------	-----------------------------------------------------------------------------